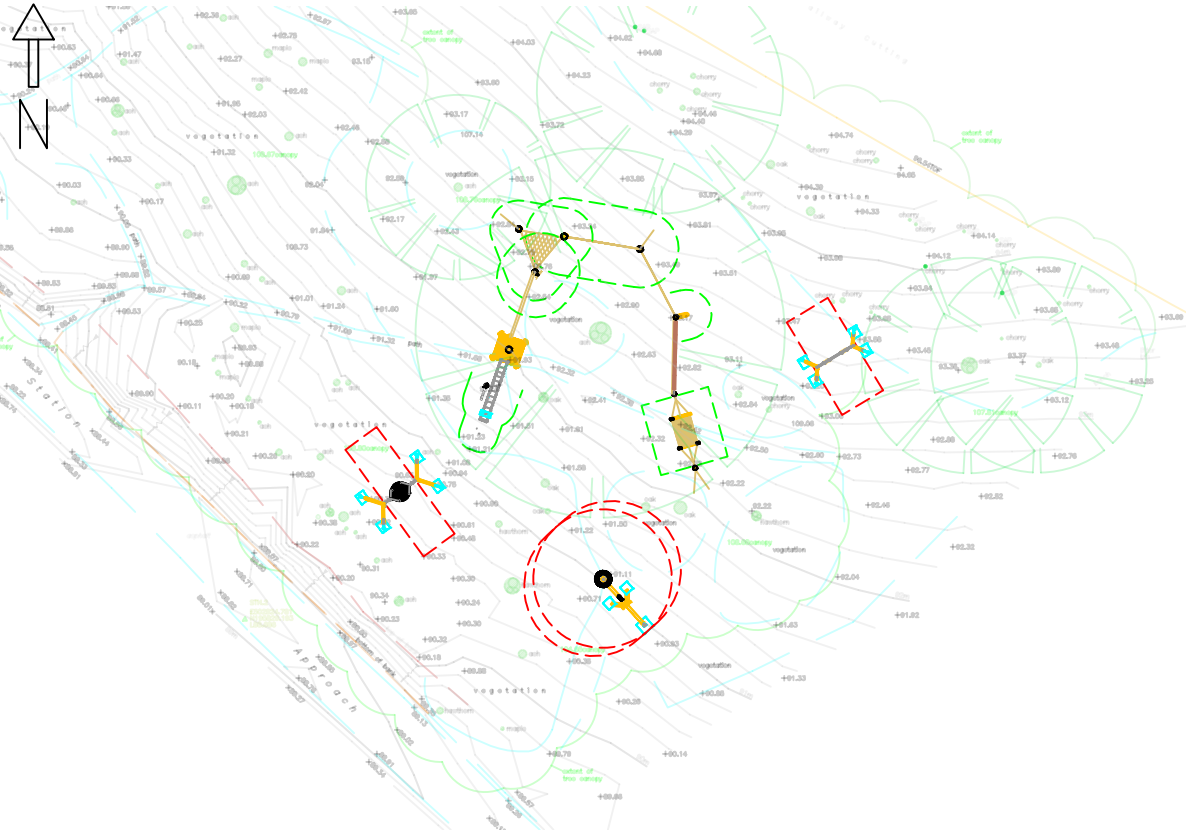


Appendix D

- Ground plan and 3D view, scale varies, please check labels

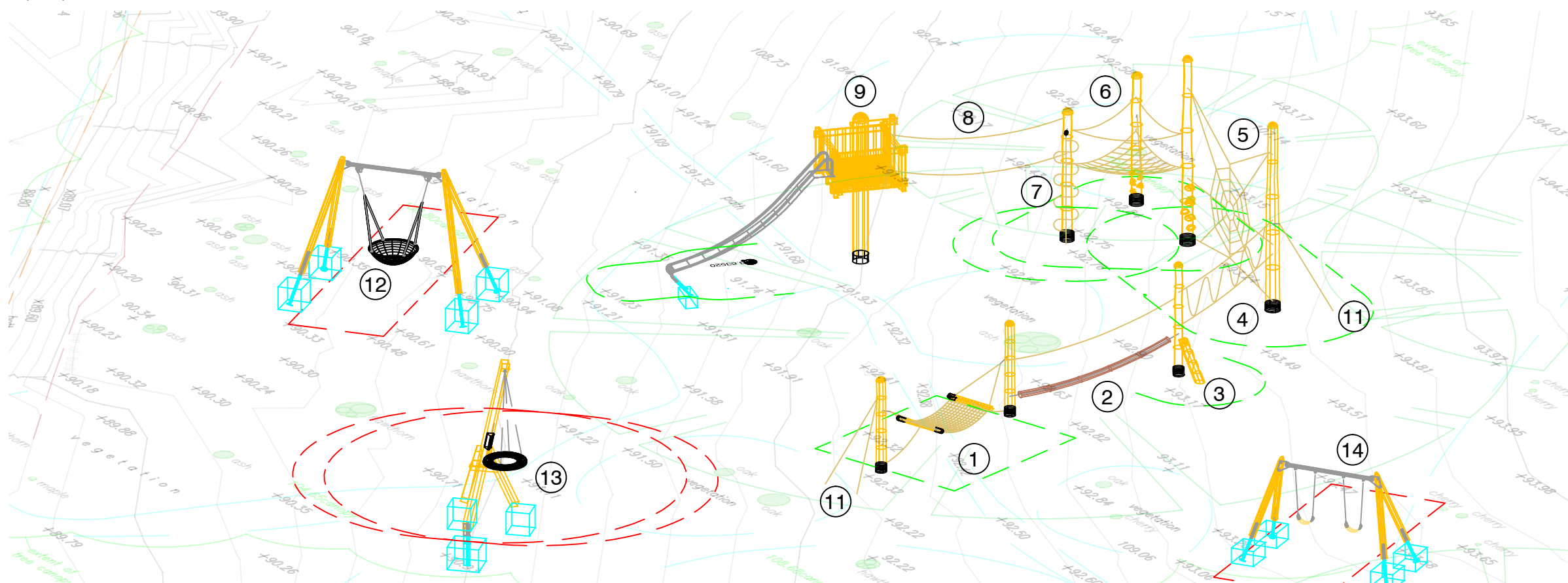
— Falling space according to EN standard



10.80000 Climbing Forest, rope colour red, consisting of:

- ① Hammock
- ② Coconut Walk Rope with Hand Rope, l=5,00m
- ③ Climbing Trunk, h=1,00m
- ④ Parallel Rope l=5,00m, red, level difference 0,40m
- ⑤ Spiderweb 3,00m x 5,00m
- ⑥ Horizontal Triangular Net, side length 3,00m, wide meshed, with 3 hand ropes
- ⑦ Indian Ladder
- ⑧ Walk Rope with Hand Rope, l approx. 5,00m
- ⑨ Large Crow's Nest, h=2,40m, with railing, lateral access, incl. trunk
- ⑩ 3.63520 Stainless Steel Slide, h=2,40m, w=0,45m
- ⑪ Safeguard Ropes
- ⑫ Nest Swing
- ⑬ Car Tyre Swing
- ⑭ Toddler Twin Swing with Cradle Seats

1a Scale 1:500



1b not to scale

Important note for customers!
The contractor has to check on site if all conditions (required space existing space etc.) for the installation of the equipment are ensured, also supply pipes (in ground or overhead cables) and other conditions have to be observed.

Recommendation for the installation of slides:
Do not install slides with sliding direction between southeast and southwest, because of heating up the material – if it is not possible, shading of the slide has to be ensured by suitable means.

Dimensions:
All dimensions are shown in centimetres unless otherwise stated.

B	Climbing Forest Option 4	23-08-17
Rev	Description	Date
Do not scale from this drawing		



Project	Chorleywood, Climbing Forest Example 4 Play Area Proposals	
Drawing Title	Conceptual General Arrangement Plan	
Scale	Date	Drawn
varies@A3	23-08-17	NK
Quotation Number	TIMQ	Checked
		BH

COPYRIGHT:
All rights to the design and equipment lie with Timberplay Ltd. and Richter Spielgeräte GmbH. This drawing is the property of Timberplay Ltd. Copyright is reserved by them and the drawing is issued on the condition that it is not copied, reproduced, retained nor disclosed to any unauthorized person either wholly or in part without the consent of Timberplay.