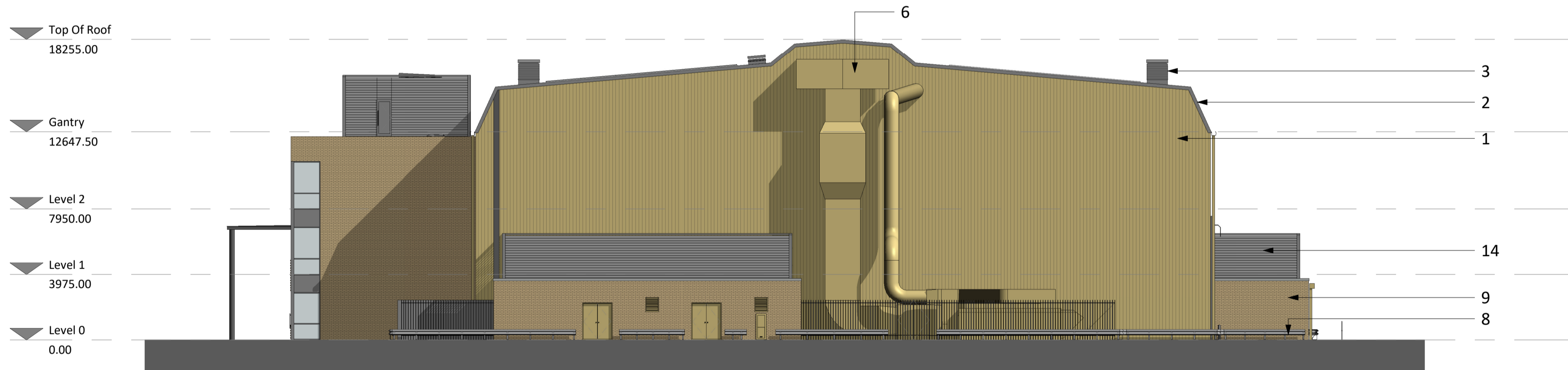


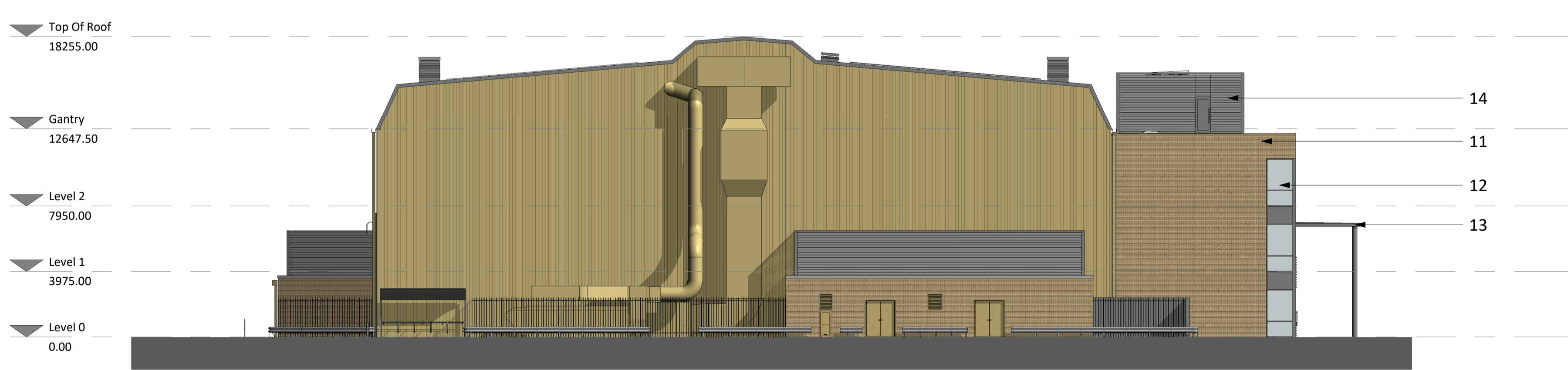
North Elevation



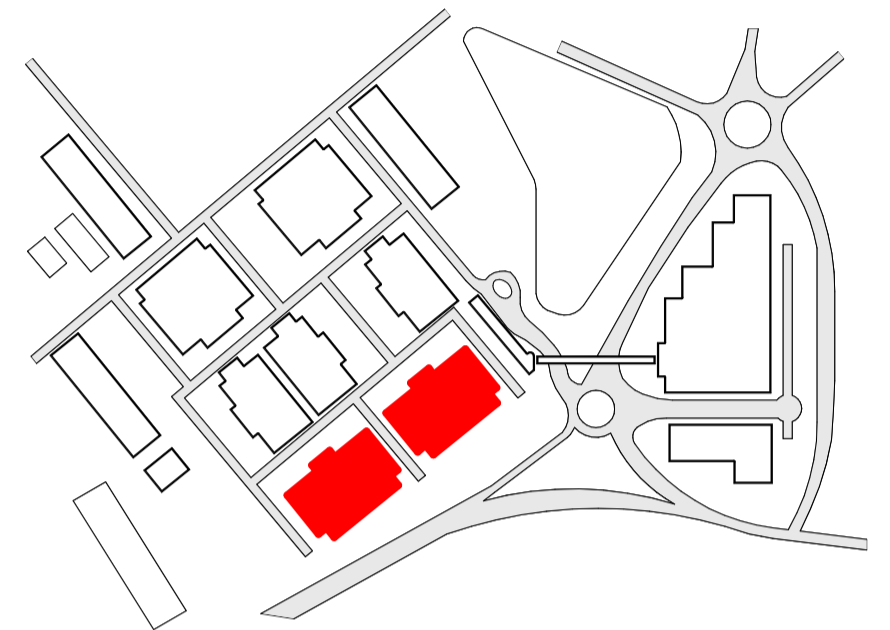
South Elevation



East Elevation



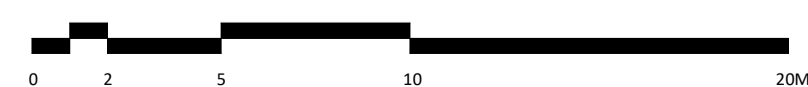
West Elevation



- FINISHES**
1. WALL CLADDING: BUILT-UP PROFILED LINER, INSULATION & OUTER SHEET. COLOUR: STRAW (RAL 080 70 30).
 2. POWDER COATED FLASHINGS, GUTTERS, DOWN PIPES & TRIMS. COLOUR: STRAW (RAL 080 70 30).
 3. 'BEEHIVE' LOUVRED ROOF VENTS. COLOUR: PURE GREY (RAL 000 55 00).
 4. POWDER COATED STEEL DOORS. COLOUR: STRAW (RAL 080 70 30).
 5. ROOF SHEETING: BUILT-UP PROFILED LINER, INSULATION & OUTER SHEET. COLOUR: PURE GREY (RAL 000 55 00).
 6. M&E DUCTWORK AND STRUCTURAL SUPPORT. COLOUR: STRAW (RAL 080 70 30).
 7. INSULATED METAL CAT FLAPS. COLOUR: STRAW (RAL 080 70 30).
 8. GALVANISED VEHICLE BARRIERS.
 9. GALVANISED STEEL GATES AND PALISADE FENCE.
 10. HORIZONTAL ELEPHANT SLIDING DOORS. COLOUR: PURE GREY (RAL 000 55 00).
 11. FACING BRICK TRINITY CREAM.
 12. ALUMINIUM DOUBLE GLAZED CURTAIN WALLING. COLOUR: PURE GREY (RAL 000 55 00).
 13. CANOPY. COLOUR: PURE GREY (RAL 000 55 00).
 14. ROOF LEVEL PLANTROOM SCREEN: CLOSED 'LOUVRE EFFECT' METAL CLADDING AND M&E OPEN LOUVRE SYSTEM. PURE GREY (RAL 000 55 00).
 15. ALUMINIUM DOUBLE GLAZED WINDOWS. COLOUR: PURE GREY (RAL 000 55 00).
 16. METAL BOLLARDS. COLOUR: PURE GREY (RAL 000 55 00).
 17. M&E LOUVRES. COLOUR: STRAW (RAL 080 70 30)
 18. PV PANELS

MASTERPLAN 2022

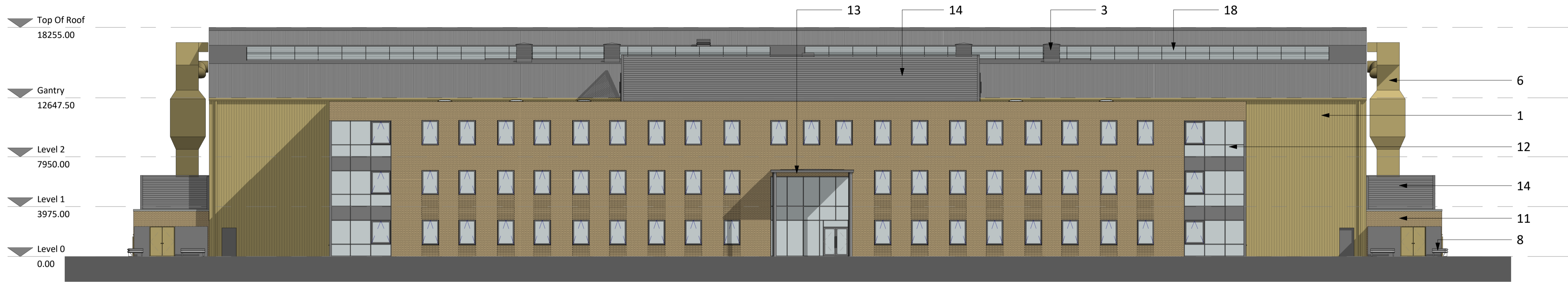
PROPOSED ELEVATIONS - 2J,2K,2H,2I & BUILDINGS 52&53



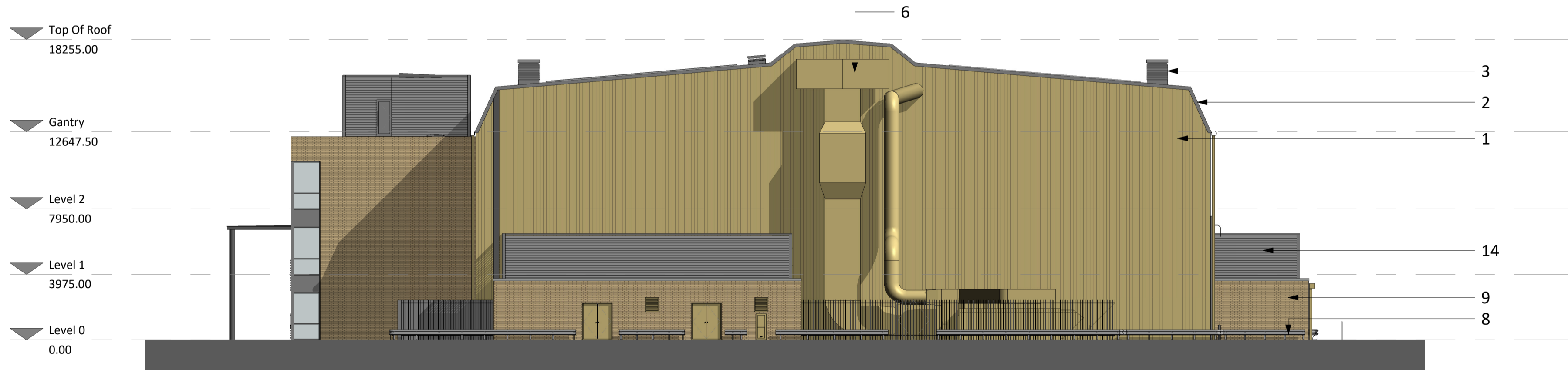
Drawn By: PM	Checked By: ES	Authorised By: SMc	Issue Status: Planning	Revision By: PM	Rev Auth By: ES	1 Castle Yard Richmond London TW10 6TF t: +44 (0) 20 8332 3900 email: info@mydn-a.com www.mydn-a.com
Date: 28/02/2022	Scale: 1 : 200@A1	Drawing No. MERLIN - DNA - ZZ - EL - DR - A - 20300	Revision date: 10/06/2022	Rev P2		



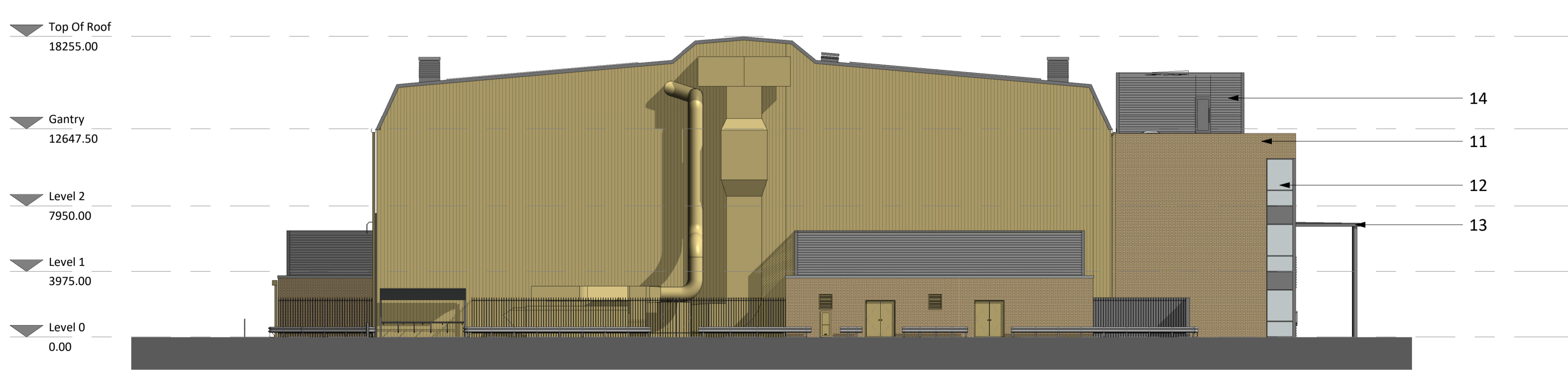
North Elevation



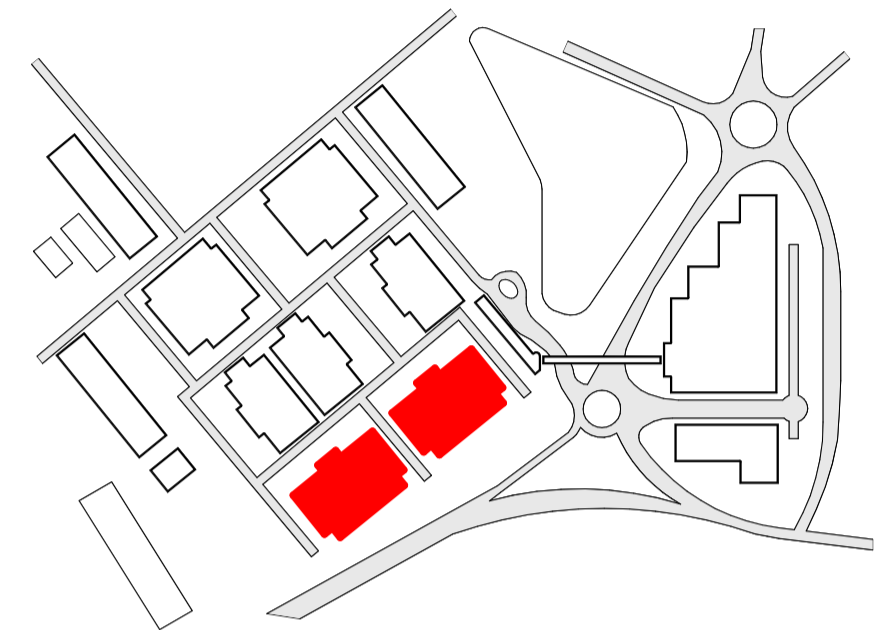
South Elevation



East Elevation



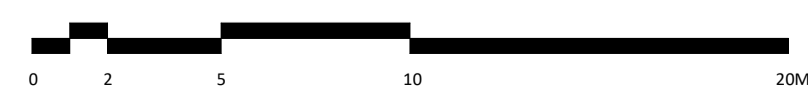
West Elevation



- FINISHES**
1. WALL CLADDING: BUILT-UP PROFILED LINER, INSULATION & OUTER SHEET. COLOUR: STRAW (RAL 080 70 30).
 2. POWDER COATED FLASHINGS, GUTTERS, DOWN PIPES & TRIMS. COLOUR: STRAW (RAL 080 70 30).
 3. 'BEEHIVE' LOUVRED ROOF VENTS. COLOUR: PURE GREY (RAL 000 55 00).
 4. POWDER COATED STEEL DOORS. COLOUR: STRAW (RAL 080 70 30).
 5. ROOF SHEETING: BUILT-UP PROFILED LINER, INSULATION & OUTER SHEET. COLOUR: PURE GREY (RAL 000 55 00).
 6. M&E DUCTWORK AND STRUCTURAL SUPPORT. COLOUR: STRAW (RAL 080 70 30).
 7. INSULATED METAL CAT FLAPS. COLOUR: STRAW (RAL 080 70 30).
 8. GALVANISED VEHICLE BARRIERS.
 9. GALVANISED STEEL GATES AND PALISADE FENCE.
 10. HORIZONTAL ELEPHANT SLIDING DOORS. COLOUR: PURE GREY (RAL 000 55 00).
 11. FACING BRICK TRINITY CREAM.
 12. ALUMINIUM DOUBLE GLAZED CURTAIN WALLING. COLOUR: PURE GREY (RAL 000 55 00).
 13. CANOPY. COLOUR: PURE GREY (RAL 000 55 00).
 14. ROOF LEVEL PLANTROOM SCREEN: CLOSED 'LOUVRE EFFECT' METAL CLADDING AND M&E OPEN LOUVRE SYSTEM. PURE GREY (RAL 000 55 00).
 15. ALUMINIUM DOUBLE GLAZED WINDOWS. COLOUR: PURE GREY (RAL 000 55 00).
 16. METAL BOLLARDS. COLOUR: PURE GREY (RAL 000 55 00).
 17. M&E LOUVRES. COLOUR: STRAW (RAL 080 70 30)
 18. PV PANELS

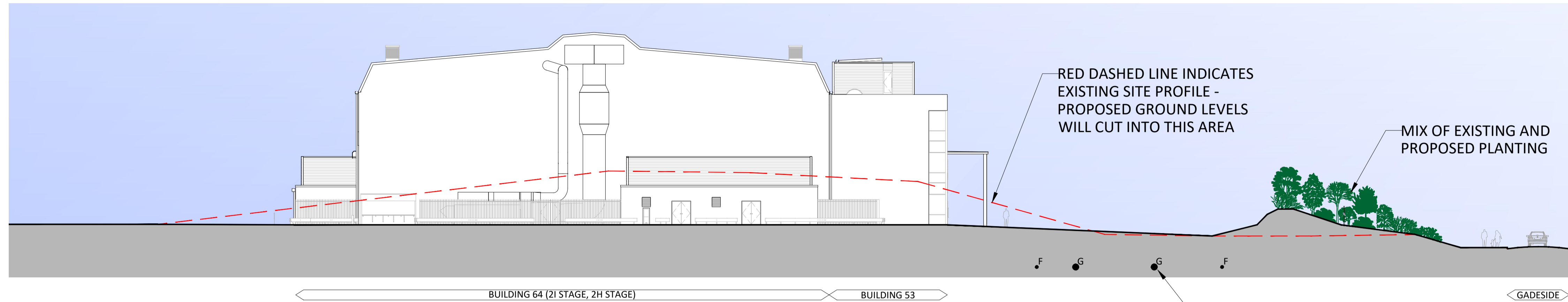
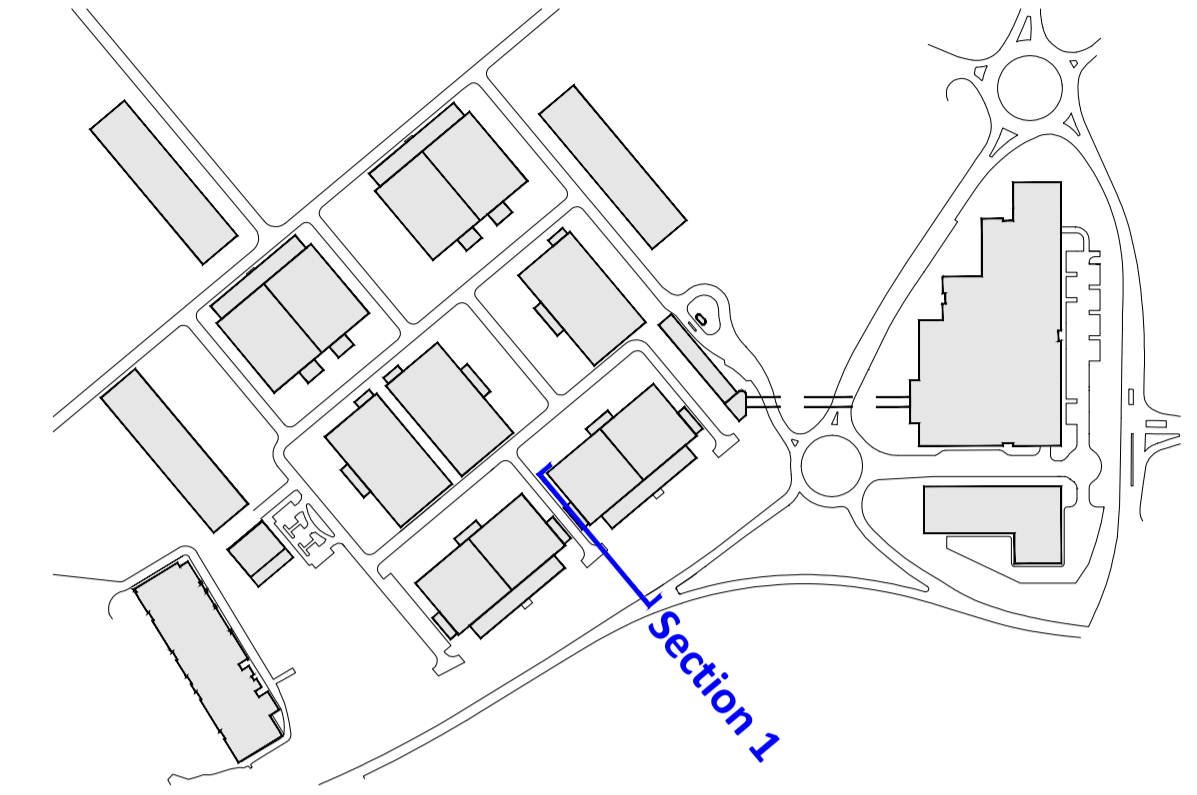
MASTERPLAN 2022

PROPOSED ELEVATIONS - 2J,2K,2H,2I & BUILDINGS 52&53

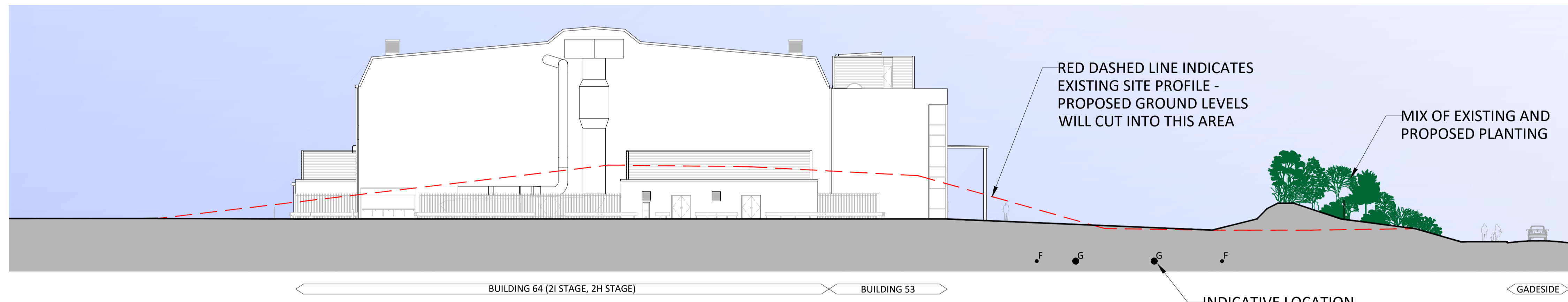


Drawn By: PM	Checked By: ES	Authorised By: SMc	Issue Status: Planning	Revision By: PM	Rev Auth By: ES	1 Castle Yard Richmond London TW10 6TF t: +44 (0) 20 8332 3900 email: info@mydn-a.com www.mydn-a.com
Date: 28/02/2022	Scale: 1 : 200@A1	Drawing No.: MERLIN - DNA - ZZ - EL - DR - A - 20300	Revision date: 10/06/2022	Rev: P2		

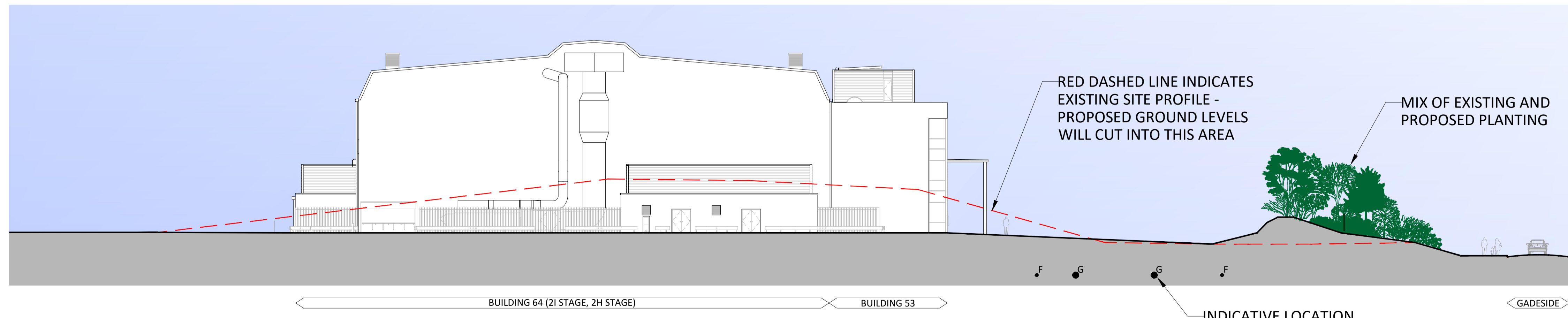
Key Plan



Section 1 (Proposed planting day 1 completion)

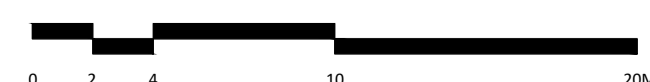


Section 1 (Proposed planting in 5 years)



Section 1 (Proposed planting 10 years)

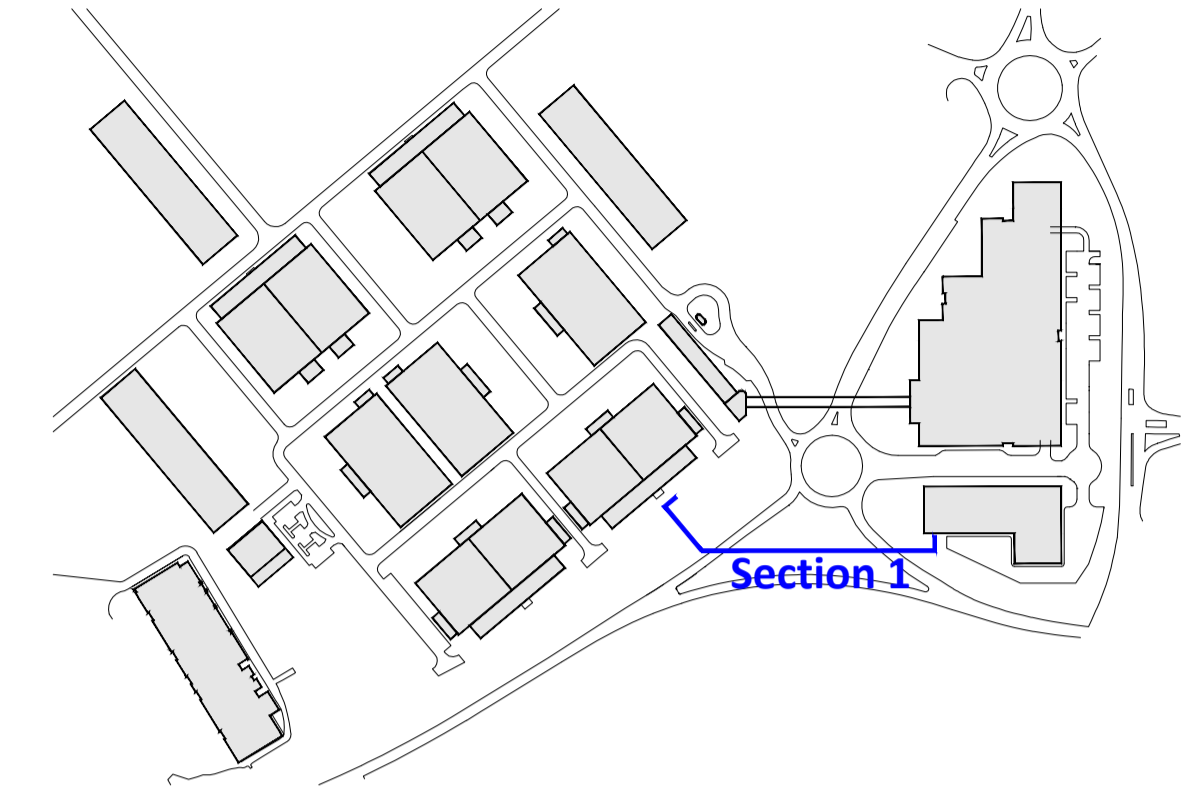
PROPOSED SITE PROFILE ———
 EXISTING SITE PROFILE - - - -
 EXISTING FOUL SERVICES F
 EXISTING GAS SERVICES G



MASTERPLAN 2022

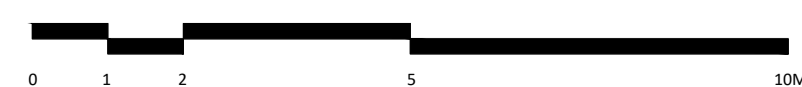
Drawn By:	Checked By:	Authorised By:	Issue Status:	Revision By:	Rev Auth By:	1 Castle Yard Richmond London TW10 6TF t: +44 (0) 20 8332 3900 email: info@mydn-a.com www.mydn-a.com
BE	ES	SMC	PLANNING	BE	ES	
Date	Scale	Drawing No.	Revision date:	Rev		
14/06/2022	1:250@A1	MERLIN - DNA - ZZ - SX - DR - A - 00007	08/07/2022	P1		

Key Plan



Section 1

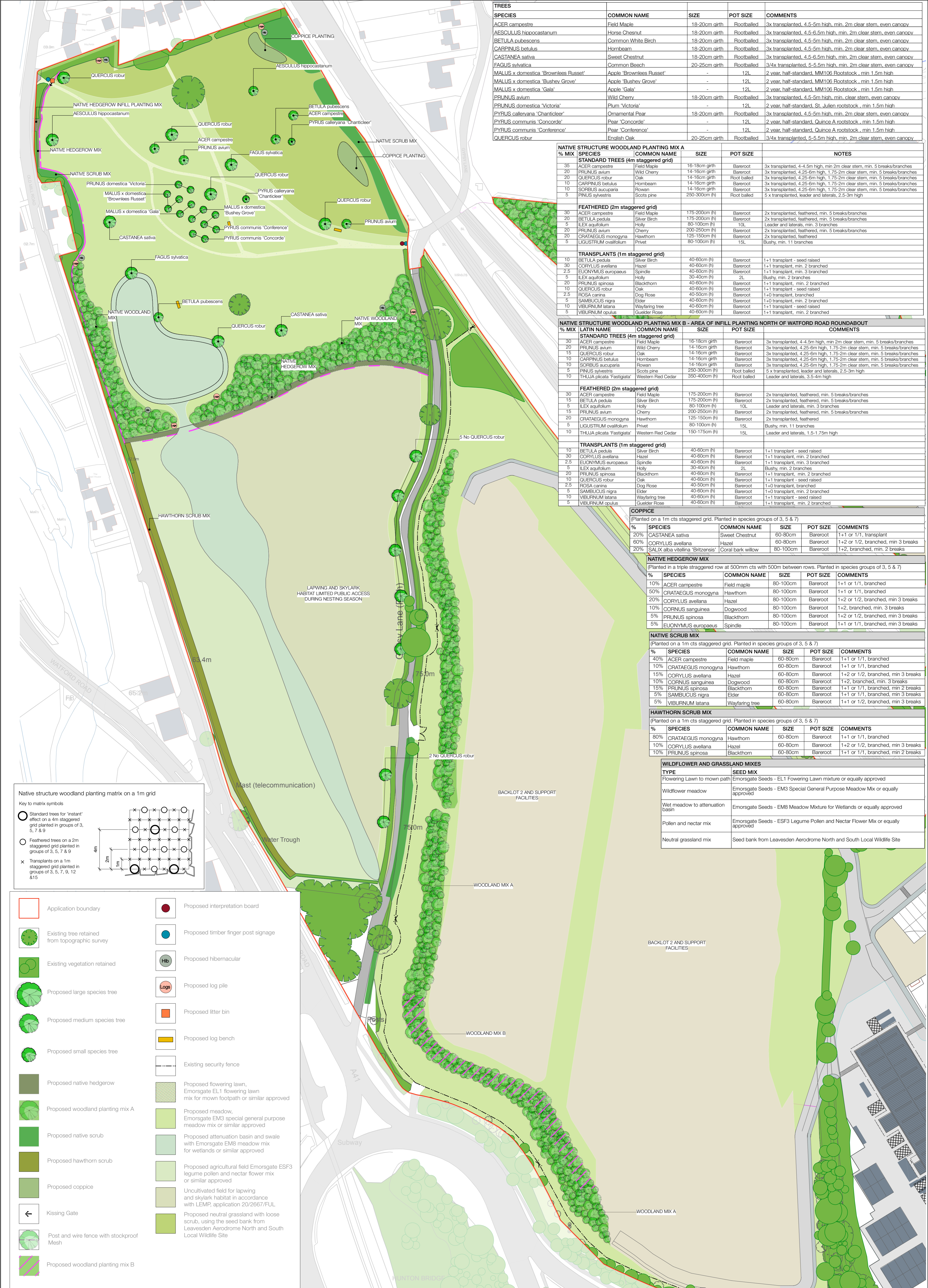
PROPOSED SITE PROFILE ———
EXISTING SITE PROFILE - - - - -



MASTERPLAN 2022

PROPOSED - SITE SECTION

Drawn By: BE	Checked By: ES	Authorised By: SMC	Issue Status PLANNING	Revision By: BE	Rev Auth By: ES	1 Castle Yard Richmond London TW10 6TF t: +44 (0) 20 8332 3900 email: info@mydn-a.com www.mydn-a.com
Date 14/06/2022	Scale 1:250@A1	Drawing No. MERLIN - DNA - ZZ - SX - DR - A - 00009	Revision date: 08/07/2022	Rev P1		
© Copyright - de novo - architecture limited						



SPECIES	COMMON NAME	SIZE	POT SIZE	COMMENTS
ACER campestre	Field Maple	18-20cm girth	Rootballed	3x transplanted, 4.5-5m high, min. 2m clear stem, even canopy
AESCULUS hippocastanum	Horse Chestnut	18-20cm girth	Rootballed	3x transplanted, 4.5-6.5m high, min. 2m clear stem, even canopy
BETULA pubescens	Common White Birch	18-20cm girth	Rootballed	3x transplanted, 4.5-5m high, min. 2m clear stem, even canopy
CARPINUS betulus	Hornbeam	18-20cm girth	Rootballed	3x transplanted, 4.5-5m high, min. 2m clear stem, even canopy
CASTANEA sativa	Sweet Chestnut	18-20cm girth	Rootballed	3x transplanted, 4.5-6.5m high, min. 2m clear stem, even canopy
FAGUS sylvatica	Common Beech	20-25cm girth	Rootballed	3/4x transplanted, 5-5.5m high, min. 2m clear stem, even canopy
MALUS x domestica 'Brownless Russet'	Apple 'Brownless Russet'	-	12L	2 year, half-standard, MM106 Rootstock, min 1.5m high
MALUS x domestica 'Bushey Grove'	Apple 'Bushey Grove'	-	12L	2 year, half-standard, MM106 Rootstock, min 1.5m high
MALUS x domestica 'Gala'	Apple 'Gala'	-	12L	2 year, half-standard, MM106 Rootstock, min 1.5m high
PRUNUS avium	Wild Cherry	18-20cm girth	Rootballed	3x transplanted, 4.5-5m high, min. clear stem, even canopy
PRUNUS domestica 'Victoria'	Plum 'Victoria'	-	12L	2 year, half-standard, St. Julien rootstock, min 1.5m high
PYRUS calleryana 'Chanticleer'	Ornamental Pear	18-20cm girth	Rootballed	3x transplanted, 4.5-5m high, min. 2m clear stem, even canopy
PYRUS calleryana 'Concorde'	Pear 'Concorde'	-	12L	2 year, half-standard, Quince A rootstock, min 1.5m high
PYRUS communis 'Conference'	Pear 'Conference'	-	12L	2 year, half-standard, Quince A rootstock, min 1.5m high
QUERCUS robur	English Oak	20-25cm girth	Rootballed	3/4x transplanted, 5-5.5m high, min. 2m clear stem, even canopy

% MIX	SPECIES	COMMON NAME	SIZE	POT SIZE	NOTES
NATIVE STRUCTURE WOODLAND PLANTING MIX A					
STANDARD TREES (4m staggered grid)					
35	ACER campestre	Field Maple	16-18cm girth	Bareroot	3x transplanted, 4-4.5m high, min 2m clear stem, min. 5 breaks/branches
20	PRUNUS avium	Wild Cherry	14-16cm girth	Bareroot	3x transplanted, 4.25-6m high, 1.75-2m clear stem, min. 5 breaks/branches
20	QUERCUS robur	Oak	14-16cm girth	Root balled	3x transplanted, 4.25-6m high, 1.75-2m clear stem, min. 5 breaks/branches
10	CARPINUS betulus	Hornbeam	14-16cm girth	Bareroot	3x transplanted, 4.25-6m high, 1.75-2m clear stem, min. 5 breaks/branches
10	SORBUS aucuparia	Rowan	14-16cm girth	Bareroot	3x transplanted, 4.25-6m high, 1.75-2m clear stem, min. 5 breaks/branches
5	PRUNUS sylvatica	Scots pine	250-300cm (h)	Root balled	5 x transplanted, leader and laterals, 2.5-3m high
FEATHERED (2m staggered grid)					
30	ACER campestre	Field Maple	175-200cm (h)	Bareroot	2x transplanted, feathered, min. 5 breaks/branches
20	BETULA pedula	Silver Birch	175-200cm (h)	Bareroot	2x transplanted, feathered, min. 5 breaks/branches
5	ILEX aquifolium	Holly	80-100cm (h)	10L	Leader and laterals, min. 3 branches
20	PRUNUS avium	Cherry	200-250cm (h)	Bareroot	2x transplanted, feathered, min. 5 breaks/branches
20	CRATAEGUS monogyna	Hawthorn	125-150cm (h)	Bareroot	2x transplanted, feathered
5	LIGUSTRUM ovalifolium	Privet	80-100cm (h)	15L	Bushy, min. 11 branches
TRANSPLANTS (1m staggered grid)					
10	BETULA pedula	Silver Birch	40-60cm (h)	Bareroot	1+1 transplant - seed raised
30	CORYLUS avellana	Hazel	40-60cm (h)	Bareroot	1+1 transplant, min. 2 branched
2.5	EUONYMUS europaeus	Spindle	40-60cm (h)	Bareroot	1+1 transplant, min. 3 branched
5	ILEX aquifolium	Holly	30-40cm (h)	2L	Bushy, min. 2 branches
20	PRUNUS spinosa	Blackthorn	40-60cm (h)	Bareroot	1+1 transplant, min. 2 branched
10	QUERCUS robur	Oak	40-60cm (h)	Bareroot	1+1 transplant - seed raised
2.5	ROSA canina	Dog Rose	40-50cm (h)	Bareroot	1+0 transplant, branched
5	SAMBUCUS nigra	Elder	40-60cm (h)	Bareroot	1+0 transplant, min. 2 branched
10	VIBURNUM latana	Wayfaring tree	40-60cm (h)	Bareroot	1+1 transplant - seed raised
5	VIBURNUM opulus	Guelder Rose	40-60cm (h)	Bareroot	1+1 transplant, min. 2 branched

% MIX	LATIN NAME	COMMON NAME	SIZE	POT SIZE	COMMENTS
NATIVE STRUCTURE WOODLAND PLANTING MIX B - AREA OF INFILL PLANTING NORTH OF WATFORD ROAD ROUNDABOUT					
STANDARD TREES (4m staggered grid)					
30	ACER campestre	Field Maple	16-18cm girth	Bareroot	3x transplanted, 4-4.5m high, min 2m clear stem, min. 5 breaks/branches
20	PRUNUS avium	Wild Cherry	14-16cm girth	Bareroot	3x transplanted, 4.25-6m high, 1.75-2m clear stem, min. 5 breaks/branches
15	QUERCUS robur	Oak	14-16cm girth	Bareroot	3x transplanted, 4.25-6m high, 1.75-2m clear stem, min. 5 breaks/branches
10	CARPINUS betulus	Hornbeam	14-16cm girth	Bareroot	3x transplanted, 4.25-6m high, 1.75-2m clear stem, min. 5 breaks/branches
10	SORBUS aucuparia	Rowan	14-16cm girth	Bareroot	3x transplanted, 4.25-6m high, 1.75-2m clear stem, min. 5 breaks/branches
5	PRUNUS sylvatica	Scots pine	250-300cm (h)	Root balled	5 x transplanted, leader and laterals, 2.5-3m high
10	THUJA plicata 'Fastigiata'	Western Red Cedar	350-400cm (h)	Root balled	Leader and laterals, 3.5-4m high
FEATHERED (2m staggered grid)					
30	ACER campestre	Field Maple	175-200cm (h)	Bareroot	2x transplanted, feathered, min. 5 breaks/branches
15	BETULA pedula	Silver Birch	175-200cm (h)	Bareroot	2x transplanted, feathered, min. 5 breaks/branches
5	ILEX aquifolium	Holly	80-100cm (h)	10L	Leader and laterals, min. 3 branches
15	PRUNUS avium	Cherry	200-250cm (h)	Bareroot	2x transplanted, feathered, min. 5 breaks/branches
20	CRATAEGUS monogyna	Hawthorn	125-150cm (h)	Bareroot	2x transplanted, feathered
5	LIGUSTRUM ovalifolium	Privet	80-100cm (h)	15L	Bushy, min. 11 branches
10	THUJA plicata 'Fastigiata'	Western Red Cedar	150-175cm (h)	15L	Leader and laterals, 1.5-1.75m high
TRANSPLANTS (1m staggered grid)					
10	BETULA pedula	Silver Birch	40-60cm (h)	Bareroot	1+1 transplant - seed raised
30	CORYLUS avellana	Hazel	40-60cm (h)	Bareroot	1+1 transplant, min. 2 branched
2.5	EUONYMUS europaeus	Spindle	40-60cm (h)	Bareroot	1+1 transplant, min. 3 branched
5	ILEX aquifolium	Holly	30-40cm (h)	2L	Bushy, min. 2 branches
20	PRUNUS spinosa	Blackthorn	40-60cm (h)	Bareroot	1+1 transplant, min. 2 branched
10	QUERCUS robur	Oak	40-60cm (h)	Bareroot	1+1 transplant - seed raised
2.5	ROSA canina	Dog Rose	40-50cm (h)	Bareroot	1+0 transplant, branched
5	SAMBUCUS nigra	Elder	40-60cm (h)	Bareroot	1+0 transplant, min. 2 branched
10	VIBURNUM latana	Wayfaring tree	40-60cm (h)	Bareroot	1+1 transplant - seed raised
5	VIBURNUM opulus	Guelder Rose	40-60cm (h)	Bareroot	1+1 transplant, min. 2 branched

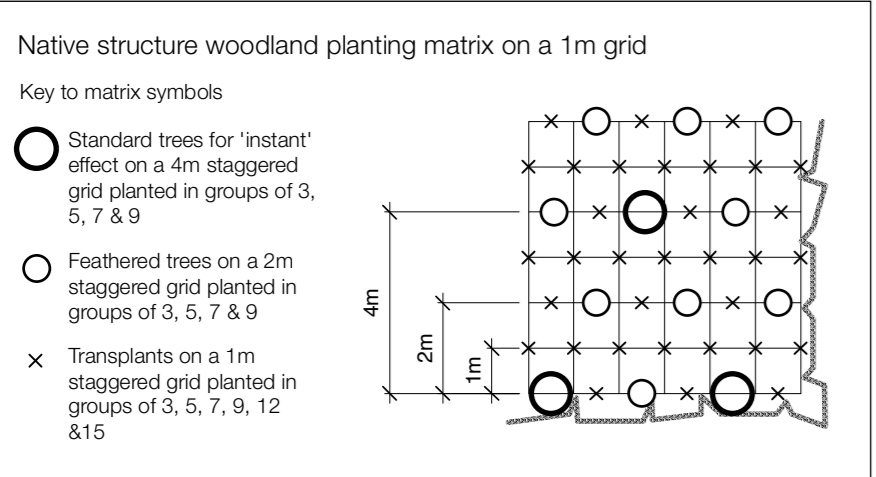
%	SPECIES	COMMON NAME	SIZE	POT SIZE	COMMENTS
COPPICE (Planted on a 1m cts staggered grid. Planted in species groups of 3, 5 & 7)					
20%	CASTANEA sativa	Sweet Chestnut	60-80cm	Bareroot	1+1 or 1/1, transplant
60%	CORYLUS avellana	Hazel	60-80cm	Bareroot	1+2 or 1/2, branched, min 3 breaks
20%	SALIX alba vitellina 'Britzensis'	Coral bark willow	80-100cm	Bareroot	1+2, branched, min. 2 breaks

%	SPECIES	COMMON NAME	SIZE	POT SIZE	COMMENTS
NATIVE HEDGEROW MIX (Planted in a triple staggered row at 500mm cts with 500m between rows. Planted in species groups of 3, 5 & 7)					
10%	ACER campestre	Field maple	80-100cm	Bareroot	1+1 or 1/1, branched
50%	CRATAEGUS monogyna	Hawthorn	80-100cm	Bareroot	1+1 or 1/1, branched
20%	CORYLUS avellana	Hazel	80-100cm	Bareroot	1+2 or 1/2, branched, min 3 breaks
10%	CORNUS sanguinea	Dogwood	80-100cm	Bareroot	1+2, branched, min. 3 breaks
5%	PRUNUS spinosa	Blackthorn	80-100cm	Bareroot	1+2 or 1/2, branched, min 3 breaks
5%	EUONYMUS europaeus	Spindle	80-100cm	Bareroot	1+1 or 1/1, branched, min 3 breaks

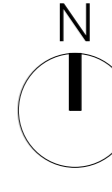
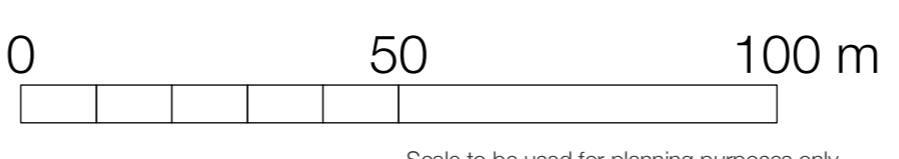
%	SPECIES	COMMON NAME	SIZE	POT SIZE	COMMENTS
NATIVE SCRUB MIX (Planted on a 1m cts staggered grid. Planted in species groups of 3, 5 & 7)					
40%	ACER campestre	Field maple	60-80cm	Bareroot	1+1 or 1/1, branched
10%	CRATAEGUS monogyna	Hawthorn	60-80cm	Bareroot	1+1 or 1/1, branched
15%	CORYLUS avellana	Hazel	60-80cm	Bareroot	1+2 or 1/2, branched, min 3 breaks
10%	CORNUS sanguinea	Dogwood	60-80cm	Bareroot	1+2, branched, min. 3 breaks
15%	PRUNUS spinosa	Blackthorn	60-80cm	Bareroot	1+1 or 1/1, branched, min 2 breaks
5%	SAMBUCUS nigra	Elder	60-80cm	Bareroot	1+1 or 1/1, branched, min 3 breaks
5%	VIBURNUM latana	Wayfaring tree	60-80cm	Bareroot	1+1 or 1/2, branched, min 3 breaks

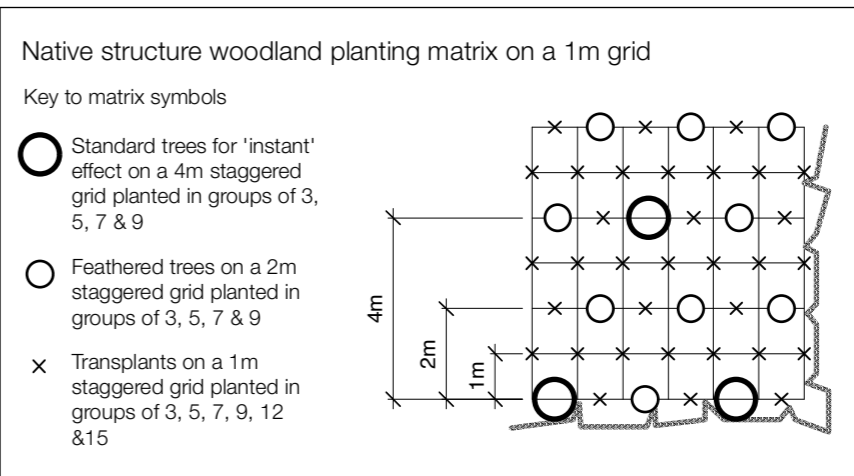
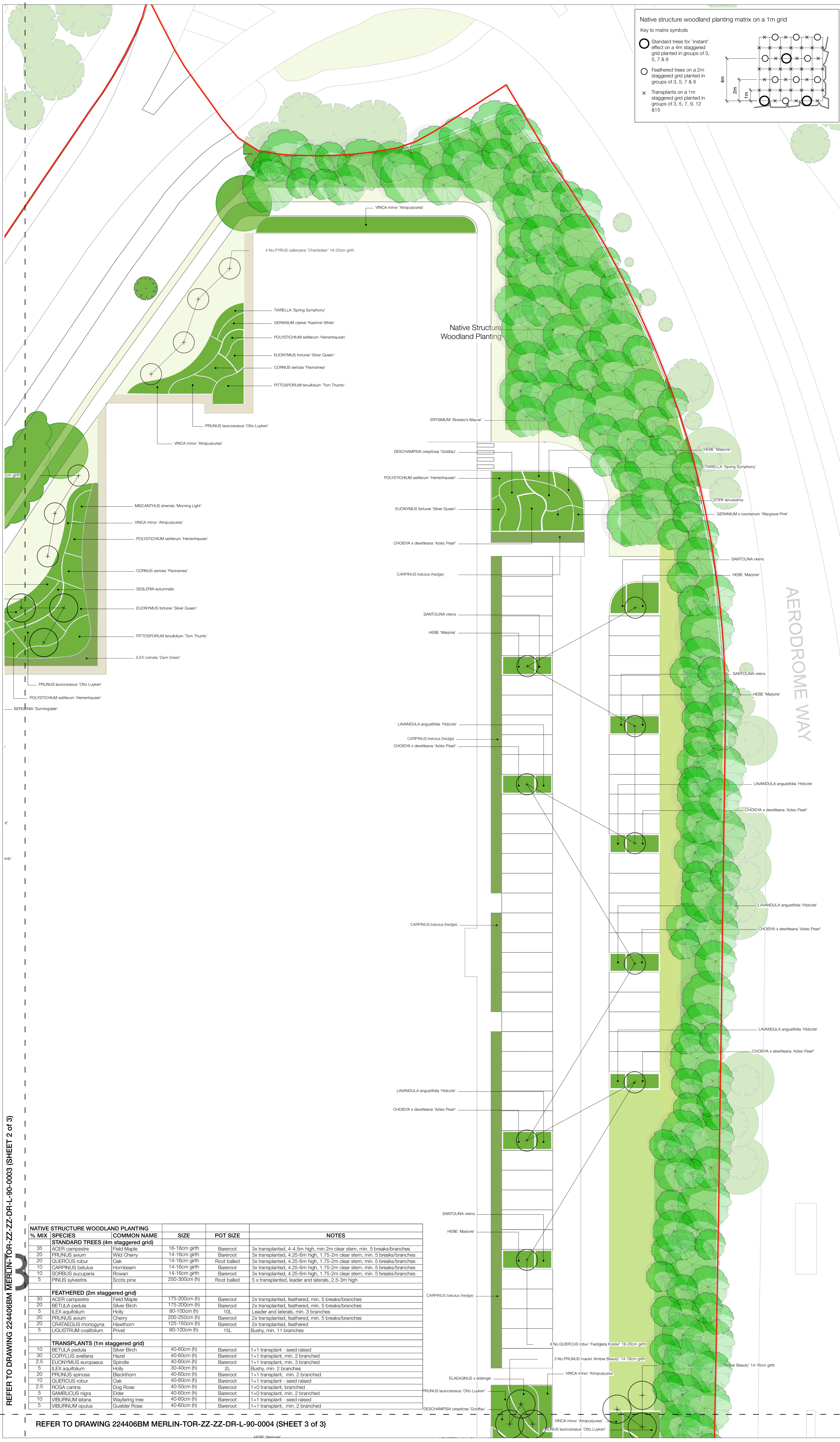
%	SPECIES	COMMON NAME	SIZE	POT SIZE	COMMENTS
HAWTHORN SCRUB MIX (Planted on a 1m cts staggered grid. Planted in species groups of 3, 5 & 7)					
80%	CRATAEGUS monogyna	Hawthorn	60-80cm	Bareroot	1+1 or 1/1, branched
10%	CORYLUS avellana	Hazel	60-80cm	Bareroot	1+2 or 1/2, branched, min 3 breaks
10%	PRUNUS spinosa	Blackthorn	60-80cm	Bareroot	1+1 or 1/1, branched, min 2 breaks

TYPE	SEED MIX
Flowering lawn to mown path	Emorsgate Seeds - EL1 Flowering Lawn mixture or equally approved
Wildflower meadow	Emorsgate Seeds - EM3 Special General Purpose Meadow Mix or equally approved
Wet meadow to attenuation basin	Emorsgate Seeds - EM8 Meadow Mixture for Wetlands or equally approved
Pollen and nectar mix	Emorsgate Seeds - ESF3 Legume Pollen and Nectar Flower Mix or equally approved
Neutral grassland mix	Seed bank from Leavesden Aerodrome North and South Local Wildlife Site



Application boundary	Proposed interpretation board
Existing tree retained from topographic survey	Proposed timber finger post signage
Existing vegetation retained	Proposed hibernaculum
Proposed large species tree	Proposed log pile
Proposed medium species tree	Proposed litter bin
Proposed small species tree	Proposed log bench
Proposed native hedgerow	Existing security fence
Proposed woodland planting mix A	Proposed flowering lawn, Emorsgate EL1 flowering lawn mix for mown path or similar approved
Proposed native scrub	Proposed meadow, Emorsgate EM3 special general purpose meadow mix or similar approved
Proposed hawthorn scrub	Proposed attenuation basin and swale with Emorsgate EM8 meadow mix for wetlands or similar approved
Proposed coppice	Proposed agricultural field Emorsgate ESF3 legume pollen and nectar flower mix or similar approved
Kissing Gate	Uncultivated field for lapwing and skylark habitat in accordance with LEMP, application 20/2667/FUL
Post and wire fence with stockproof Mesh	Proposed neutral grassland with loose scrub, using the seed bank from Leavesden Aerodrome North and South Local Wildlife Site
Proposed woodland planting mix B	





- Key
- Proposed tree planting
 - Proposed woodland planting mix A
 - Proposed ornamental hedgerow
 - Proposed shrub and groundcover
 - Proposed hydroseeding
 - Proposed amenity grass, Emorsgate EG22 strong lawn grass mix or similar
 - Proposed meadow, Emorsgate EM3 special general purpose meadow mix or similar approved
 - Existing trees located from the aerial photograph to be retained
 - Existing tree retained from topographic survey

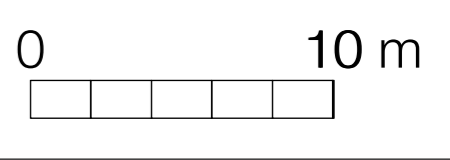
FOR PLANTING SCHEDULES REFER TO SCHEDULES DRAWING 224406BM MERLIN-TOR-ZZ-ZZ-SH-L-90-0001

REFER TO DRAWING 224406BM MERLIN-TOR-ZZ-ZZ-DR-L-90-0003 (SHEET 2 of 3)

NATIVE STRUCTURE WOODLAND PLANTING						
% MIX	SPECIES	COMMON NAME	SIZE	POT SIZE		NOTES
STANDARD TREES (4m staggered grid)						
35	ACER campestre	Field Maple	16-18cm girth	Bareroot	3x transplanted, 4-4.5m high, min 2m clear stem, min. 5 breaks/branches	
20	PRUNUS avium	Wild Cherry	14-16cm girth	Bareroot	3x transplanted, 4.25-6m high, 1.75-2m clear stem, min. 5 breaks/branches	
20	QUERCUS robur	Oak	14-16cm girth	Root balled	3x transplanted, 4.25-6m high, 1.75-2m clear stem, min. 5 breaks/branches	
10	CARPINUS betulus	Hornbeam	14-16cm girth	Bareroot	3x transplanted, 4.25-6m high, 1.75-2m clear stem, min. 5 breaks/branches	
10	SCORBUS aucuparia	Rowan	14-16cm girth	Bareroot	3x transplanted, 4.25-6m high, 1.75-2m clear stem, min. 5 breaks/branches	
5	PINUS sylvestris	Scots pine	250-300cm (h)	Root balled	5 x transplanted, leader and laterals, 2.5-3m high	
FEATHERED (2m staggered grid)						
30	ACER campestre	Field Maple	175-200cm (h)	Bareroot	2x transplanted, feathered, min. 5 breaks/branches	
20	BETULA pedula	Silver Birch	175-200cm (h)	Bareroot	2x transplanted, feathered, min. 5 breaks/branches	
2.5	EUONYMUS europaeus	Spindle	40-60cm (h)	Bareroot	1+1 transplant, min. 3 branches	
5	ILEX aquifolium	Holly	30-40cm (h)	2L	Bushy, min. 2 branches	
20	PRUNUS spinosa	Blackthorn	40-60cm (h)	Bareroot	1+1 transplant, min. 2 branches	
10	QUERCUS robur	Oak	40-60cm (h)	Bareroot	1+1 transplant - seed raised	
2.5	ROSA canina	Dog Rose	40-60cm (h)	Bareroot	1+0 transplant, branched	
5	SAMBUCUS nigra	Elder	40-60cm (h)	Bareroot	1+0 transplant, min. 2 branched	
5	VIBURNUM lantana	Wayfaring tree	40-60cm (h)	Bareroot	1+1 transplant - seed raised	
5	VIBURNUM opulus	Guiselder Rose	40-60cm (h)	Bareroot	1+1 transplant, min. 2 branched	
TRANSPLANTS (1m staggered grid)						
10	BETULA pedula	Silver Birch	40-60cm (h)	Bareroot	1+1 transplant - seed raised	
30	CORYLUS avellana	Hazel	40-60cm (h)	Bareroot	1+1 transplant, min. 2 branched	
2.5	EUONYMUS europaeus	Spindle	40-60cm (h)	Bareroot	1+1 transplant, min. 3 branched	
5	ILEX aquifolium	Holly	30-40cm (h)	2L	Bushy, min. 2 branches	
20	PRUNUS spinosa	Blackthorn	40-60cm (h)	Bareroot	1+1 transplant, min. 2 branched	
10	QUERCUS robur	Oak	40-60cm (h)	Bareroot	1+1 transplant - seed raised	
2.5	ROSA canina	Dog Rose	40-60cm (h)	Bareroot	1+0 transplant, branched	
5	SAMBUCUS nigra	Elder	40-60cm (h)	Bareroot	1+0 transplant, min. 2 branched	
5	VIBURNUM lantana	Wayfaring tree	40-60cm (h)	Bareroot	1+1 transplant - seed raised	
5	VIBURNUM opulus	Guiselder Rose	40-60cm (h)	Bareroot	1+1 transplant, min. 2 branched	

REFER TO DRAWING 224406BM MERLIN-TOR-ZZ-ZZ-DR-L-90-0004 (SHEET 3 of 3)

Notes/Revisions



Masterplan 2022
Warner Bros.

Island Site
Planting Plan Sheet 1 of 3

Status:	FOR PLANNING	Drawn by:	JD	Checked by:	BP
Project Number:	224401BM	Scale @ A1:	1:250 @ A1	Date:	2/2022
Drawing Number:	MERLIN-TOR-ZZ-ZZ-DR-L-90-0002	Revision:			E

© Terence O'Rourke Ltd 2022 Scale to be used for planning purposes only

LONDON
 23 Hickon Street
 London W1B 4BG
 BIRMINGHAM
 Enterprise House, 115 Edmund Street
 Birmingham B3 2JU
 BOURNEMOUTH
 Everdene House, Deanleigh Road
 Bournemouth BH7 7DU
 TELEPHONE
 020 3864 6705
 www.torfd.co.uk